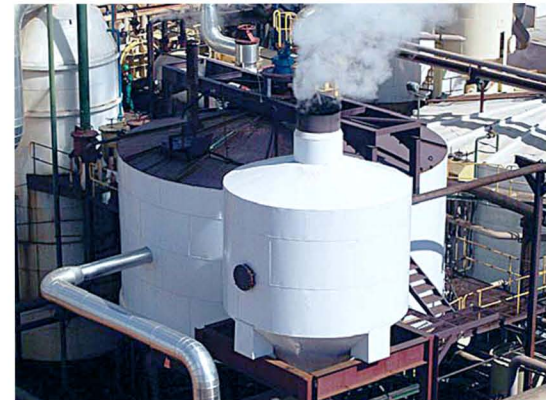




CANE JUICE CLARIFIER SYSTEMS

KEY BENEFITS

- Higher throughput (up to 50% increase)
- Lower clarified juice turbidities at higher throughput (<50 - 100 NTU achievable)
- Less fine fiber carry over through clarified juice screens resulting in reduced backend centrifugal maintenance
- Simpler operation and supervision (one flocculent addition point)
- Lower sucrose loss by inversion (juice residence time < 30 mins)
- Reduced color development
- Reduced purity drop in mud (mud residence time < 60 mins)
- Easy viewing of mud levels (mud windows fitted to side of vessel)
- Lower juice volume (shorter liquidation)
- Reduced lime usage
- Improved mud scraper design -> heavier mud
- Lower maintenance
- Quicker recovery from upset
- Approximate maximum throughputs under normal operating conditions.



Diameter (m)	TCD
8	8 800
10	14 000
12	20 000
14	27 000